

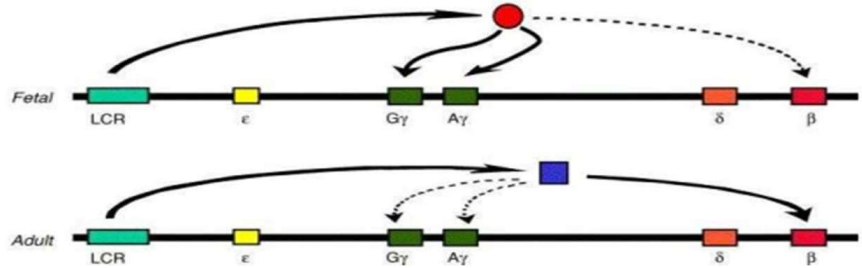
Research Program in Sickle Cell Genomics

Fees: Rs. 236000/- Duration: 6 months

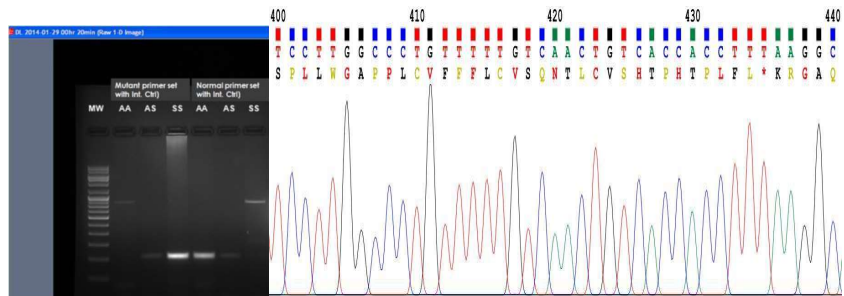
Fees: Rs. 118000/- Duration: 2 months

Fees Rs. 59000/- Duration: 1 month

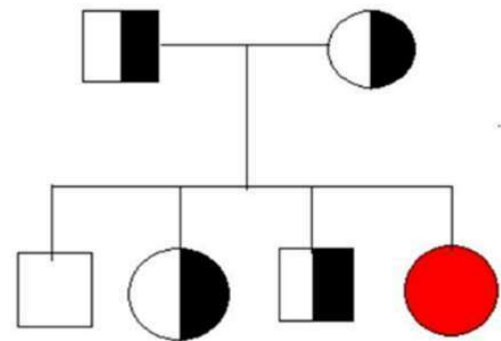
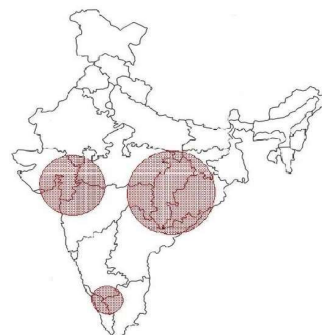
ATGP1: ADEETECH's program on Sickle Cell Disease Genetic Modifiers



ATGP2: SCD Clinical Genomics



SCD EPIDEMIOLOGY DATA ANALYSIS / GENEFREQUENCY STUDIES IN SCD



One of the most appreciated projects by students who wants to go abroad and want to make career in human genomics. A very rare course with equal weightage on wet lab and in silico bioinformatics course contents. We also provide field work based projects in tribal areas and also only lab based projects at Pune location.

Key features:

Theory: Review of literature, Scientists and institutions working in India and abroad, Current status of India in the subject of interest. Calculations, Reactions setup, Thesis writing guidance, PPT preparation, Mock presentation.

Practical / Wet lab protocols/ Bioinformatics insilco work: Database Selection of gene, Primer design, human genomic DNA extraction, PCR standardization, Scale up PCR, Post PCR purifications, DNA electrophoresis, DNA sequencing sample prep, DNA sequence analysis, Mutation studies, Protein modelling.

Deliverables: Original research project, NCBI database publication with first authorship, Nucleotide and protein database, Recommendation and career guidance for study abroad: USA and western countries.

Projects for PhD, M.Sc. B.Sc. B.Tech, M.Tech. in Biotechnology.